
TV TUNER USER MANUAL

Model No. EzTV306

Installed on Smart-Leaf® Y

Thank you for choosing ezcap™ USB ATSC Receiver, You have made an excellent decision. The following contents guide you how to use the product. Hope this device will bring you nice digital experience.

Please ensure that windows os is correctly installed and started before connecting the **USB ATSC Receiver** to your computers **USB 2.0** port. Due to power and bandwidth requirement, we do not recommend connecting the unit into a USB Hub.

Connecting the Aerial

It is recommended to connect to a roof top aerial during the first time installation as this may provide a better signal quality than the provided portable antenna.

You will need to ensure that you are located in an area that has **Digital ATSC Terrestrial** coverage.

IMPORTANT!

The base of the provided antenna generates a magnetic field. If you have a heart pacemaker and notice any anomalies, you should keep away from this device and seek advice from your doctor.

Always keep the antenna away from all equipment that is sensitive to electromagnetic fields, e.g. PCs, notebooks, hard drives, diskettes, credit cards etc. Improper use may result in data loss or other faults.

Specification

Item Name	USB ATSC Receiver
Model Number	EzTV306
Interface	USB standard
Recording Format	MPEG2
Input	75Ω RF
Output	TS
Power Supply	USB Bus
Consumed Power	≤ 3W
Editing Software	ArcSoft TotalMedia 3.5
Dimension / Weight	101(L)×28(W)×17(H)mm / 28g
System Requirements	One available USB port
	Pentium4 CPU or above
	512MB RAM or above
	1GB free HDD space
	CD-ROM for installation
	Windows 2000, XP, Vista, Windows 7

Driver Installation

“If you have any anti-virus software enabled, please disable it during the installation of the software.”

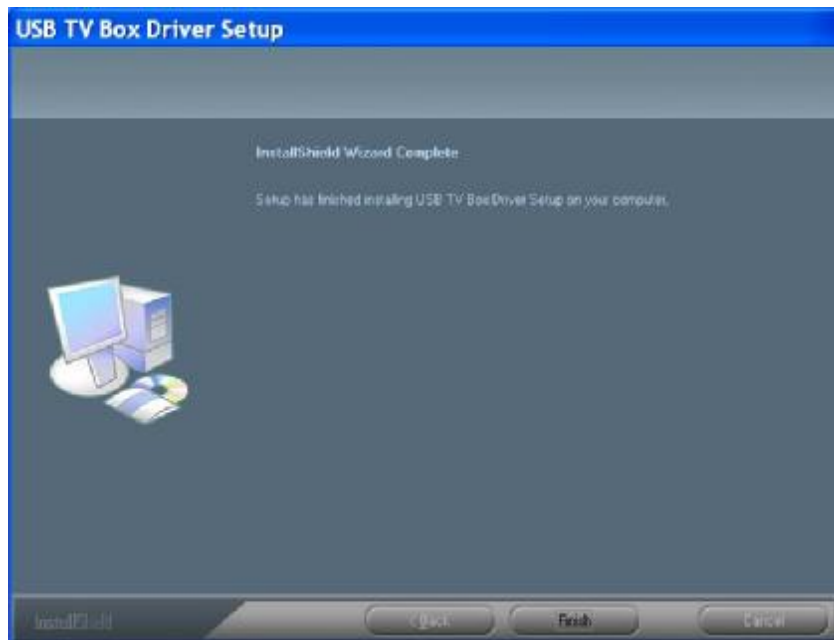
Then, insert the "ArcSoft TotalMedia 3.5 Installations CD-ROM" into your CD drive, and open it, you should see a window.

Please select "Install Driver".



Next, you can choose set up language for the installation and click "Next" icon. In the next windows, go on to click "Next" icon.

When "USB TV Box Driver Setup" window appears click the "Finish" button to complete the driver installation.



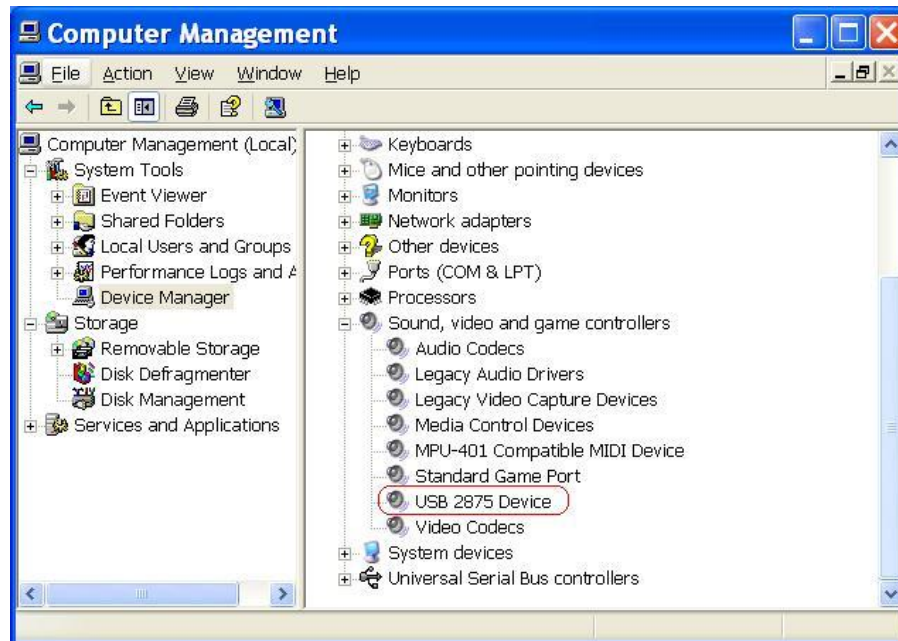
Then, you need to connect the USB ATSC Receiver to your computer's USB2.0 port. Computer system will appear "Found the new hardware" on the right low of the window. Please wait for the installing

automatic until the system appears "Your hardware is now installed and ready to use".

Now, you will now need to check that the drivers are installed correctly.

Right click on My Computer and Left Click on Properties. Click on Hardware tab and then Device Manager.

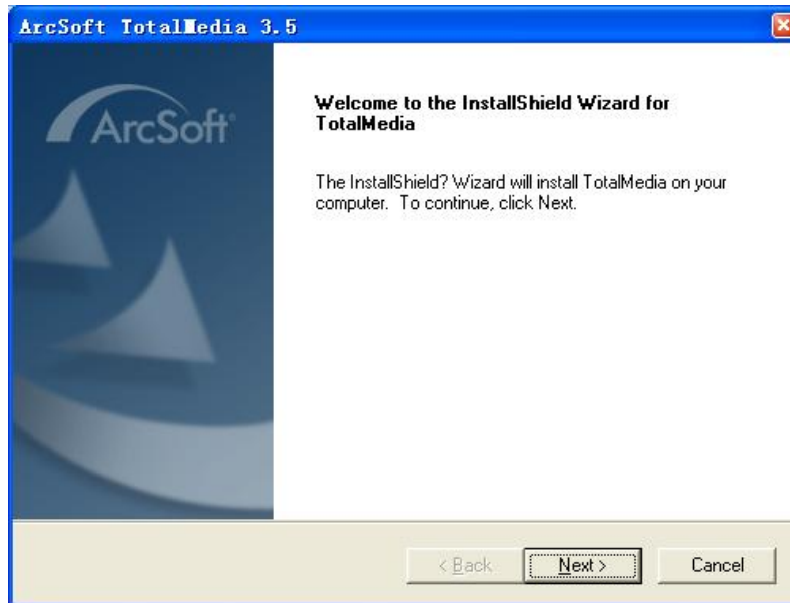
In the "Device Manager", click on the "+ symbol" on the "Sound Video and Game controllers" section. If the driver is installed correctly you should see the "USB 2875 Device".



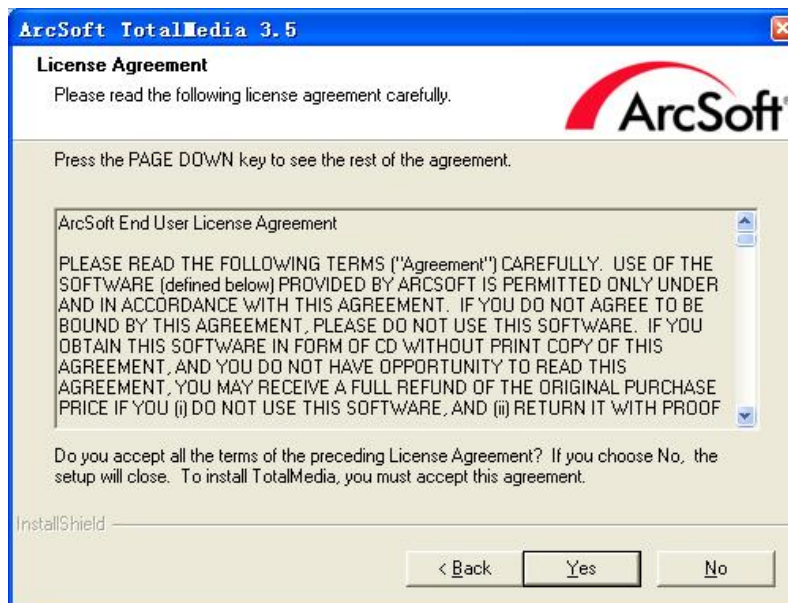
If it has a Yellow mark next to it then this means that the driver is not installed correctly. You will need to remove the driver and disconnect the **USB ATSC Receiver** from the computer and re-connect it to install the driver again.

ArcSoft TotaMedia 3.5 Software Installation

Insert the "ArcSoft TotaMedia 3.5 Installations CD-ROM" into your CD drive, and open it, you should see a window. Please select "Install HDTV Player" to begin to install software. When the following window, click "Next"



In the following window, click "Yes"



You need to write your company name and license key in the following window, then click "Next"



ArcSoft TotalMedia 3.5

Customer Information

Please enter your information.

Please enter you name, the name of the company for which you work and the product license key.

User Name:
dufangyuan

Company Name:
ygz

License Key:
453HZY-YN7J8TE6YD-VATR872L

InstallShield

< Back Next > Cancel

In the next windows, select destination folder and select program folder for your software and click "Next".

Then click "Finish" to complete the software installation.

If the software is installed correctly, you should see "TotalMedia 3.5" icon on your desktop,

ArcSoft TotaMedia 3.5 Software Usage

Now, you need to set software before you want to watch TV.

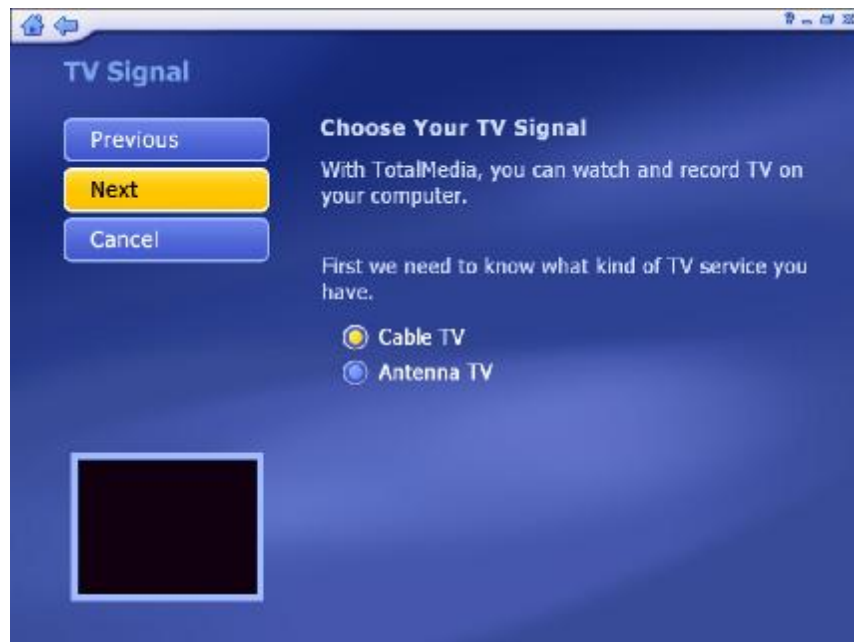
Please double click "TotaMedia 3.5" icon on your desktop, you will get a window, please click "TV" icon, click "Next" icon to begin configuring your TV signal on the "TV Signal" panel, you can select your region on the next panel, then click "Next" icon to enter the window.

Please select video device to be "BDA 2875 TVTuner", and click "Next" icon.

Note: Please do not try to select another device "BDA 2875 TV Tuner_1", because you can't get any channels in case you do it.



In the following window, according to the TV service you have, select your TV signal to be "Cable TV" or "Antenna TV", and click "Next" icon.



Now, please click "Start" icon to start scanning channel, you should get some channels name on the software panel, then click "Next" icon.



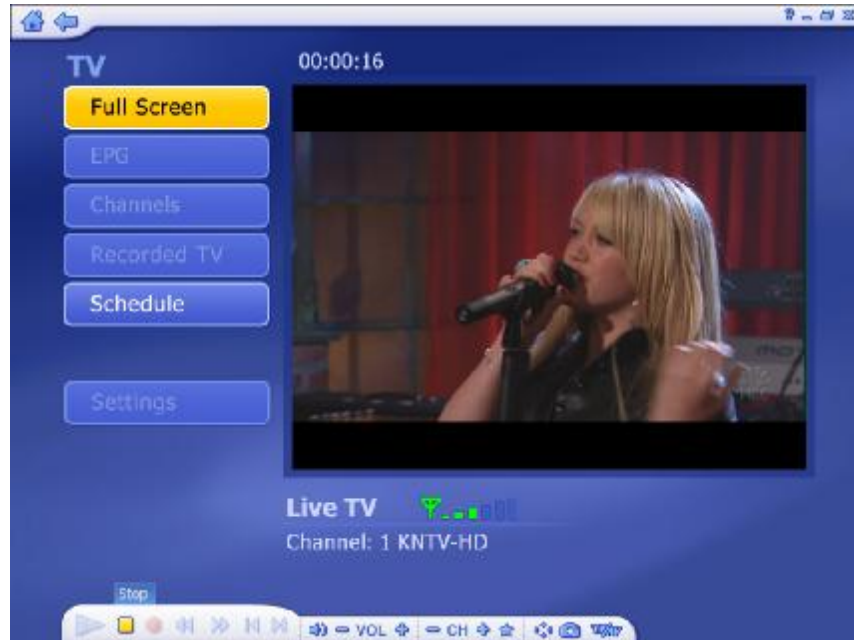
In the window, you must select "NO", and click "Next" icon.




Note: Please do not try to select "Yes", because you can't scan some channels in case you do it



In the next window, according to your needs, select "Yes" or "No", and click "Next" icon. Then click "Finish" icon to complete the setting of TV signal, you can see the following picture.

Now, you can record TV, please click "Record" icon to start recording, and when you want to stop recording, please click "Stop" icon. The recorded file will be saved in the "My Documents | My Videos" folder by default.



If you want to edit the recorded files, please click "Recorded TV" icon. and you will get the following picture. Select one file, click  icon to edit the file according to your needs, and click  icon to rename it, Click  icon, you can delete the file.



Note: Please click the "?" key on the right top of the software panel, you should read the help file, it will help you how to use the software.

Options include:

Full Screen - Displays the video over the entire program display area - typically the entire screen. You can click the Full Screen button to switch into full screen mode. Press "Esc" or double-click the mouse to go back to a normal window.

Note: You should check the "Time Shift" option in [TV Settings](#) to display the time bar.

[EPG](#) - Display the electronic programming guide.

[Channels](#) - View the program channel list. Click a channel to learn more about it.

[Recorded TV](#) - Burn the recorded TV shows to a disc.

[Schedule](#) - Program the application to record TV shows.

[Teletext](#) - Watch teletext (if available).

[Settings](#) - View and edit the settings for the TV module.

Floating Toolbar

The floating toolbar appears for a few seconds whenever you move the mouse:



The "Home" button (it looks like a house) takes you to the program's [startup screen](#). The arrow takes you to the previous screen.



The toolbar at the bottom of the screen features standard audio/video playback controls (Play/Pause, Stop, Record,) plus Volume and Channel controls. Special controls for TV playback and only appear when necessary.



When watching movie discs, video files, and recorded TV shows:

Use these buttons to adjust the playback speed at variable rates.



When watching MPEG-2 videos and recorded TV shows:

Use these buttons to skip forward by roughly 27 seconds, or backwards by roughly 27 seconds. These buttons are useful for bypassing commercials or skipping back slightly if you accidentally skip ahead too far.

When watching movie discs:

Use these buttons to skip to the next or previous chapter.



When watching TV shows:

Click this button to select channel from the Favorite Channel list.



When watching TV shows and video files:

Click this button to adjust aspect ratio.



When watching TV shows and video files:

Click this button to take a screen capture of the current screen. The captured image will be saved in the "My Documents | My Pictures" folder by default.



When watching TV shows:

Click this button to choose an input TV source (cable or antenna).